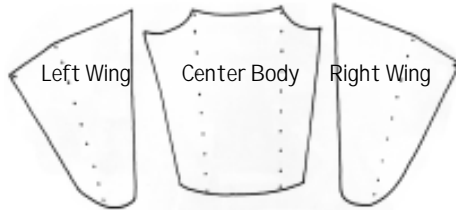




ASSEMBLY INSTRUCTIONS

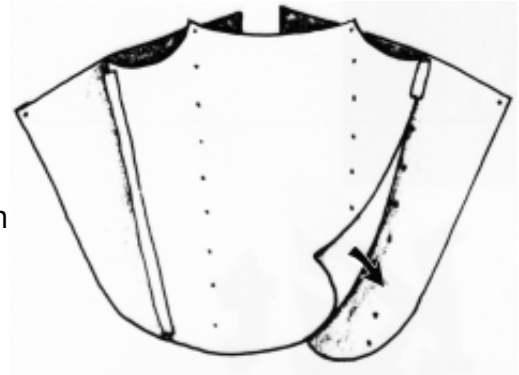


Have Ready:

- Scotch Tape
- Ruler
- Scissors
- Crayons, colored markers or finger paints.

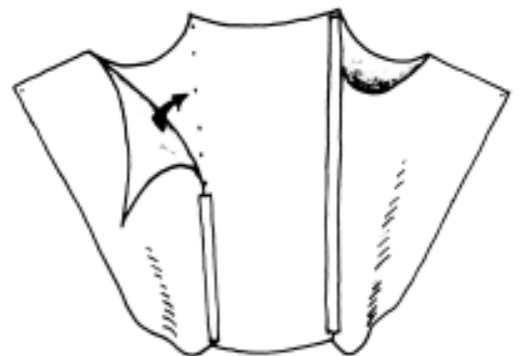
1. Attach The Wings

Place both wings down on your work surface facing each other. Line up the left edge of the center body with the holes marked on the left wing. Tape in place along the entire length. Repeat for other side. This will be the front of the kite that you decorate. Decorate your kite before continuing to Step 2.



2. Creating the Air Foils

Flip the kite over, decorated side down. Line up the inside edges of the wings to the holes marked on the center body, as shown. Tape in place along entire length.



3. Attaching the Bridle

Adhere the reinforcing circles at the hole marked on each wing tip. Do not cover the hole. Measure and cut a length of string 54 inches long. Thread one end of string through each hole at the wing tip. Join wing tips together and pull gently through your fingers to find the exact center. Tie an overhand knot making a 1 - 2 inch loop at the center. Tie your flying line to this loop.



FLYING TIPS

Your Pocket Kite does not require a tail in moderate winds, but streamers are a great way to add color and decorate your kite! Just attach strips of ribbon or crepe paper to the bottom edge of the kite with tape ... as many as you like!